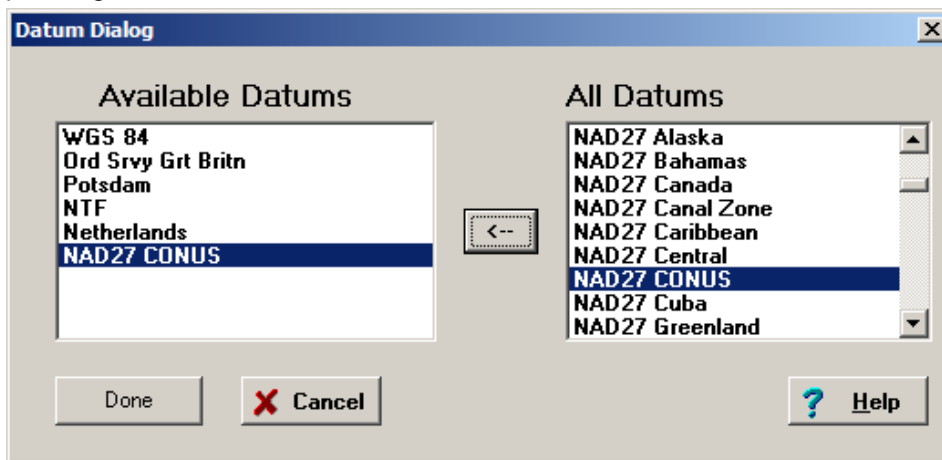




GPS Utility Instructions

Downloading GPS waypoints into ArcView using GPS Utility:

- 1) Install GPS Utility (GPSU) on your system. This program can be downloaded from <http://www.gpsu.co.uk>. Install version 4.10.9 or later, as earlier versions have an occasional bug.
- 2) Launch **GPSU** and select **File->New**. Buttons in the upper right hand corner show the current datum and coordinate format. Make sure they match what you'll be using in ArcView. If you are using the NAD83 or NAD27 datum, you will have to add them to the list of available datum selections. Click the datum button, then click the "add" button on the pop-up window, then choose the NAD27 CONUS or NAD83 datum from the "All Datums" column and move it to the "Available Datums" column by pressing the arrow button.



- 3) Attach the GPS unit to your computer using a **PC interface (serial) cable** and make sure the GPS unit is turned on.
- 4) Choose **GPS->Setup** and make sure that the **Garmin** option and the **correct COM port** (generally COM1 but sometimes COM2 if you have two serial ports) is checked.
- 5) Choose **GPS->Download All**. Uncheck everything except for "Waypoints" on the selection screen, then click OK. GPSU should present a window with your list of waypoints. Delete any default Garmin waypoints by selecting the point and hitting the delete key.
- 6) Making sure you have set the coordinate format and datum, choose the **File->Save As** option, and save your file as type "**Dbase waypoint fileset (dbf +shp,shx)**." This will generate the ArcView point shapefile. (**Important:** If you have data that span more than one UTM zone, you will need to convert each set of points separately.)
- 7) Launch ArcView and insert the new shapefile as a theme in a view. Your GPS waypoints should now be visible!

Uploading waypoints into a GPS unit from ArcView using GPS Utility:

- 1) Launch GPS Utility (GPSU).
- 2) Choose **File->Open**, and change the file type to Shapefiles (.shp). Navigate to your ArcView shapefile and select it. GPSU will confirm the coordinate system and datum, and prompt you for the **UTM zone** (generally 10 or 11, no letter needed) if relevant and for an **ID field** for your waypoints. It will then open a window with the waypoints contained in the shapefile.
- 3) Make sure your GPS unit is connected to your computer and turned on.
- 4) Choose **GPS->Upload All**. Confirm that your waypoints are present in your GPS unit!