

prbo



**Willow Flycatcher Surveys of Soper-Wheeler  
Properties in Poplar Valley, Meadow Valley,  
and Spanish Ranch  
2006 Report**

**Ryan D. Burnett,**

**July 20, 2006**

**PRBO Conservation Science**

**Northern Sierra Program**

**PO BOX 634**

**Chester, CA 96020**

**[www.prbo.org](http://www.prbo.org)**

**Contribution Number 1509**

**Introduction:** We surveyed 3 riparian areas on Soper-Wheeler property for the presence of Willow Flycatcher: a section of Massey Creek in Meadow Valley, Pine-leaf Creek near Spanish Ranch, and Poplar Creek in Poplar Valley (Figures 1 & 2).

**Methods:** At each site we slowly walked the length of the survey area stopping every 100 meters to listen and record all birds detected. On the second visit we used a megaphone to play recordings of Willow Flycatcher vocalization following the protocol outlined in Bombay et al (2000). We played vocalizations and listened for response every 50 meters throughout the site. The Pine-leaf Creek and Massey Creek sites were first visited on 29 June 2006 with the Poplar Creek site first visited on July 3. The Pine-leaf Creek and Poplar Creek sites were then re-visited on 10 July 2006; the Massey Creek site was not revisited due to a lack of suitable habitat.

**Personnel:** Surveys were conducted by Ryan Burnett and Eric Wood of PRBO Conservation Science who combined, have over 15 years of experience conducting avian surveys, including eight years experience censusing Willow Flycatcher in the Sierra Nevada.

**Results:** Willow Flycatchers were not detected at any of the three sites surveyed. The Massey Creek site in Meadow Valley is an ephemeral stream overtopped by conifers with sparse willow and herbaceous cover. We thoroughly surveyed the site one time and found no evidence of Willow Flycatcher. Based on a review of the literature on habitat preferences of this species in the Sierra Nevada it is my opinion this site contains no suitable habitat for the species (Flett and Sanders 1987, Green et al. 2003). It is my opinion that the Poplar Creek and Pine-leaf Creek sites have the potential to support breeding Willow Flycatcher. However, we are confident that our survey method would have detected the species at these sites had they been present. Thus we are confident that in 2006, Willow Flycatcher are not breeding at any of these sites.

**Table 1. Willow Flycatcher survey dates at Poplar Valley, Spanish Ranch, and Meadow Valley sites in 2006.**

Site	1st Visit	Survey Time	2nd Visit	Survey Effort
Pine-leaf Creek (Spanish Ranch)	6/29/2006	0815 - 0940	7/10/2006	0600-0715
Massey Creek (Meadow Valley)	6/29/2006	0645 - 0800	NA <sup>1</sup>	NA <sup>1</sup>
Poplar Creek (Poplar Valley)	7/3/2006	0800 - 0930	7/11/2006	0750-0930

<sup>1</sup>Only surveyed once due to lack of any suitable habitat.

**Table 2. Avian species detected at each site during Soper-Wheeler property Willow Flycatcher Surveys in 2006.**

<b>Species</b>	<b>Poplar Creek</b>	<b>Massey Creek</b>	<b>Pine-leaf Creek</b>
Cooper's Hawk			X
Spotted Sandpiper	X		
Mourning Dove			X
Anna's Hummingbird			X
Calliope Hummingbird	X		
Red-breasted Sapsucker	X		X
Hairy Woodpecker	X	X	X
American Dipper	X		
Northern Flicker	X		X
Western Wood-Pewee	X		X
Olive-sided Flycatcher	X		
Dusky Flycatcher			X
Warbling Vireo	X		X
Cassin's Vireo			X
Stellar's Jay	X	X	X
Tree Swallow	X		X
Cliff Swallow			X
Mountain Chickadee		X	X
Red-breasted Nuthatch		X	X
House Wren			X
American Robin	X		X
European Starling			X
Nashville Warbler			X
Yellow Warbler	X		X
Hermit Warbler			X
MacGillivray's Warbler	X	X	X
Western Tanager			X
Black-headed Grosbeak	X		X
Lazuli Bunting		X	
Spotted Towhee	X	X	X
Chipping Sparrow	X		X
Fox Sparrow	X		
Song Sparrow	X		X
Dark-eyed Junco	X	X	X
Brown-headed Cowbird	X		X
Brewer's Blackbird		X	
Evening Grosbeak			X
Purple Finch	X		X
Cassin's Finch			X
Pine Siskin		X	X

Figure 1. Soper-Wheeler property along XX Creek (Meadow Valley site) and Pine-leaf Creek (Spanish Ranch site) surveyed for Willow Flycatcher by PRBO in 2006.

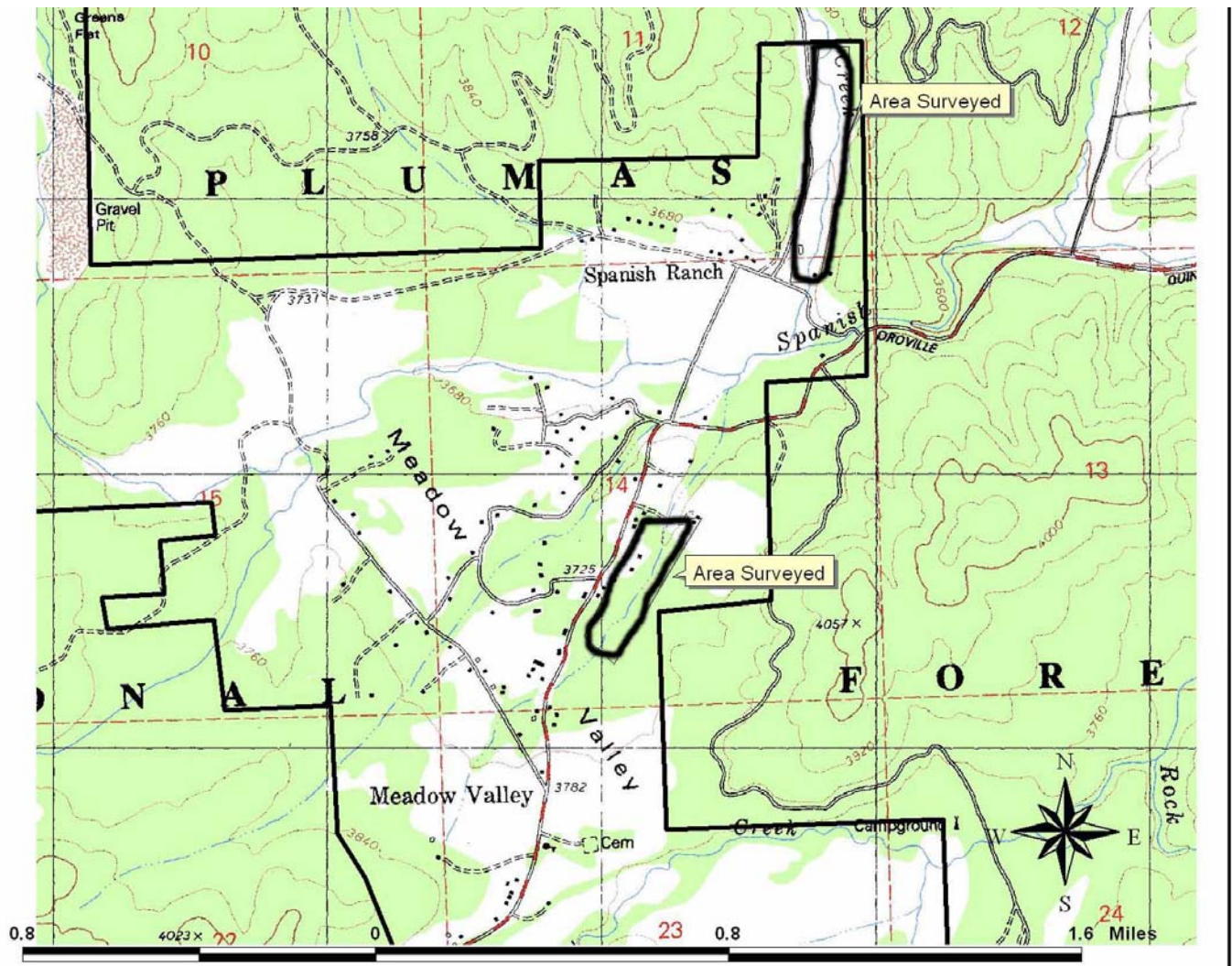
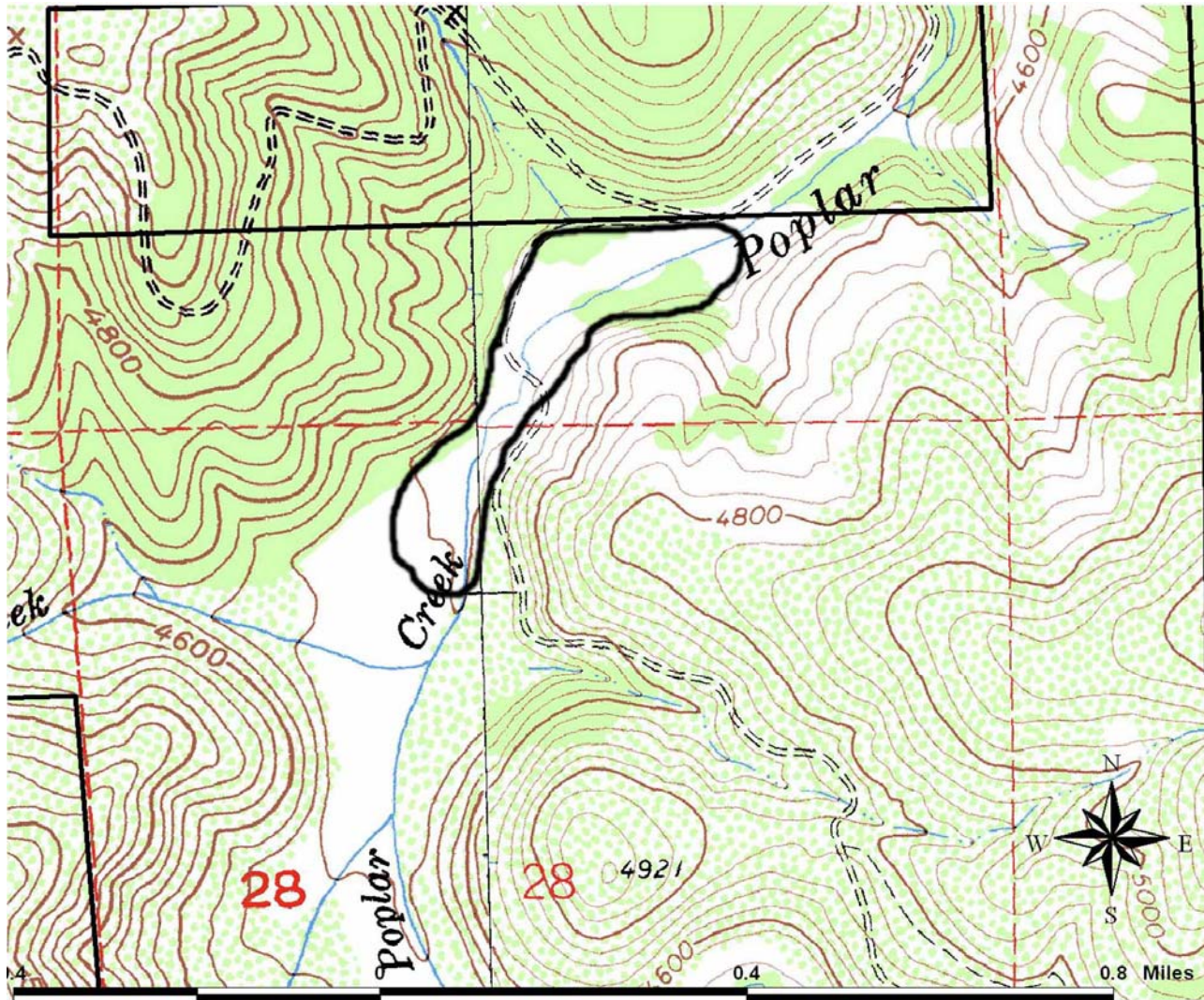


Figure 2. Poplar Valley area surveyed by PRBO for Willow Flycatcher in 2006.



## **Literature Cited**

Bombay, H.L., T.M. Ritter, and B.E. Valentine. 2000. A Willow Flycatcher Survey Protocol for California. California Department of Fish and Game. Available at: [http://www.dfg.ca.gov/hcpb/species/stds\\_gdl/bird\\_sg/wilflyproto.pdf](http://www.dfg.ca.gov/hcpb/species/stds_gdl/bird_sg/wilflyproto.pdf)

Flett, M.A. and S.D. Sanders. 1987. Ecology of a Sierra Nevada Population of Willow Flycatchers 18: 37-42.

Green, G.A., H.L. Bombay, and M.L. Morrison. 2003. Conservation assessment of the willow flycatcher in the Sierra Nevada. USDA Forest Service, Region 5, Vallejo, California.